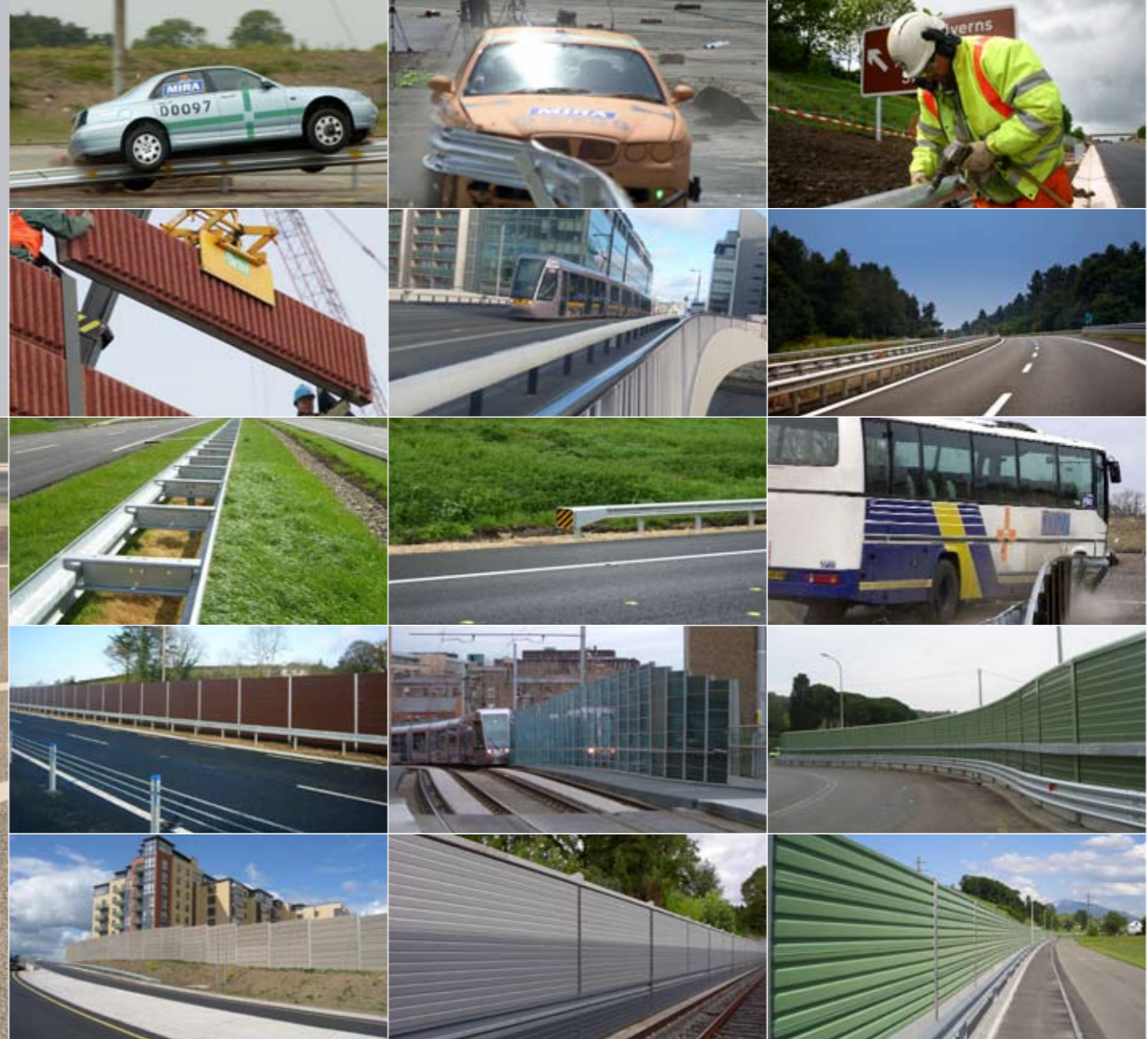


Corus Vetex N2AW5 5.0m Single Sided Safety Barrier



Holgate Infrastructure & Motorway Services IRL
The Grange, Newcastle Road,
Lucan, Co. Dublin,
Republic of Ireland.
Tel Dublin: +353 (0)1 505 5890
Tel Cork: +353 (0)21 425 1964
Tel Galway: +353 (0)91 561 342
Tel Belfast: +44 (0)28 903 14805

Fax: +353 (0)1 505 5891
Email: info@holgate.ie

www.holgate.ie

Holgate Infrastructure & Motorway Services UK
Monckton Road Industrial Estate,
Denby Dale Road, Wakefield,
WF2 7AL, United Kingdom.
Tel: +44 (0)11 324 44458

Holgate Infrastructure & Motorway Services NI
2nd Floor, 31 High Street,
Lurgan, Co. Armagh,
BT668AH, Northern Ireland.
Tel: +44 (0)28 383 17797

Containment Level	Vehicle Impact Test					Class of Working Width	Level of Working Width W1
	Test	Impact Speed (km/h)	Impact Angle (degrees)	Vehicle Mass (t)	Vehicle Type		
Normal Containment							
N1	TB 31	80	20	1.5	Car	W1	< 0.6m
N2	TB 32	110	20	1.5	Car		
Higher Containment							
H1	TB 42	70	15	10.0	Rigid HCV	W2	< 0.8m
H2	TB 51	70	15	13.0	Bus	W3	< 1.0m
H3	TB 61	80	20	16.0	Rigid HCV	W4	< 1.3m
Very High Containment							
H4a	TB 71	65	20	30.0	Rigid HCV	W5	< 1.7m
H4b	TB 81	65	20	38.0	Articulated HCV	W6	< 2.1m
Impact Severity Level							
Impact Severity Level	Index Values						
	ASI (Acceleration Severity Index)	THIV (Theoretical Head Impact Velocity)	PHD (Post Head Deceleration)				
A	< 1.0	< 33 km/h	< 20g	W7	< 2.5m		
B	< 1.4	< 33 km/h	< 20g	W8	< 3.5m		

Corus Vetex N2AW5 5.0m

Single Sided Safety Barrier



Vetex corrugated beam, 3mm thickness on 110 x 49 mm Z posts. Standard driven post 1750mm - Embedment in ground 1050 mm. Long driven post 2000mm - Embedment in ground 1300 mm. Extra long driven post 2250mm - Embedment 1550mm. Hot dip galvanising in accordance with EN ISO 1461.

All nuts and bolts in accordance with Corus drawing VC70C. All washers manufactured to EN ISO 7089-7091. The barrier system is to be installed by trained and certified Vetex installers in accordance with manufacturers drawings.

Notes:

1. For details of alternative posts, foundations and fixings see Fig 1.
2. This type of barrier shall not be used where the full height length (excluding P1's & P4's) is less than 20m.
3. This type of barrier shall not be used on curves of radius less than 50m.
4. Where a kerb is required the preferred height is 75mm. max height is 125mm.

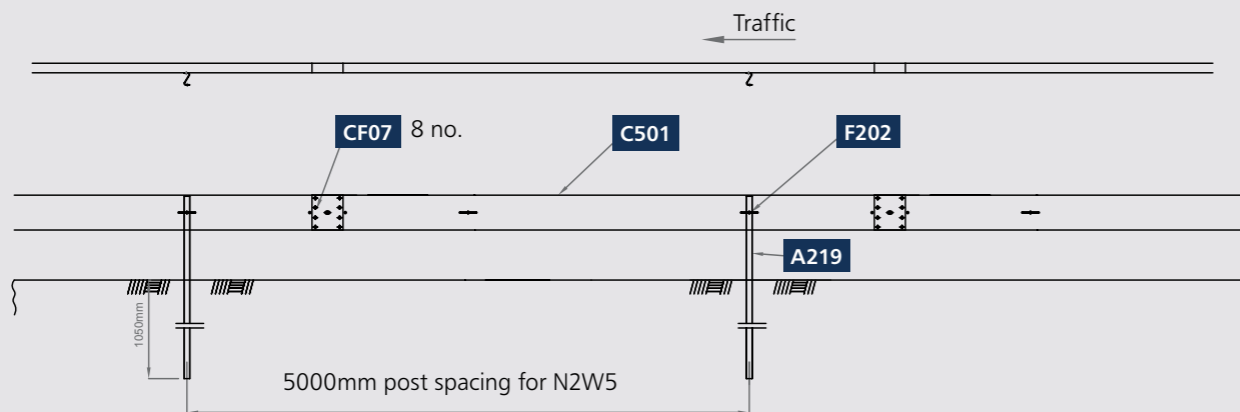
Performance

Containment Level	N2
Acceleration Severity Index "ASI"	A
Working Width	W5 (1.7 m)

Dimensions

Height (Centre of Beam)	600 +/- 30mm
Overall Width	210 mm
Beam Type	C501
Post Type (Standard)	A219
Post Centres	5.0 m

Plan View Of Barrier



Side View Of Barrier

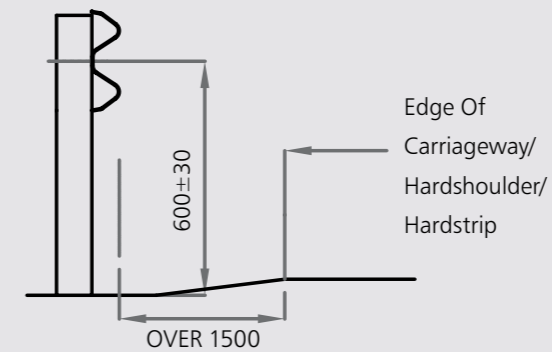
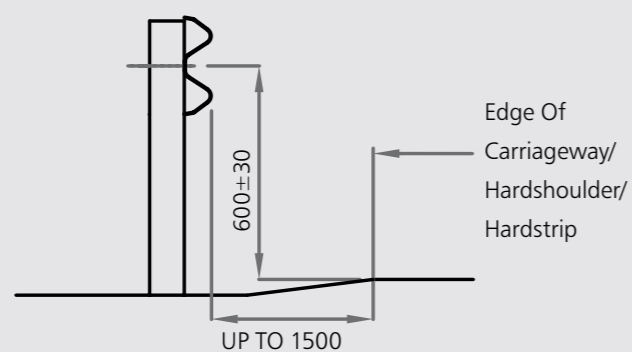


Fig 1

